

Frey



manufactured in
European Union

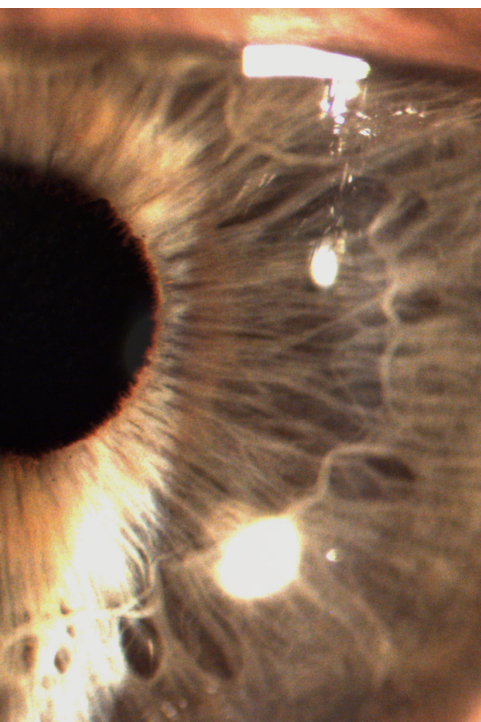


SLI-200 FREY SLIT LAMP WITH IMAGING SYSTEM

freymedical.eu

SLI-200

VIZUALIZE. IMPROVE WORKFLOW. SHARE.



Stream images and videos across multiple devices. Frey SLI-200 allows you to collaborate with other health care professionals, share knowledge and discuss diagnosis, improve clinical outcomes in real time, easily. Ideal for general practices, educational and training institutions. Video streaming and photo sharing enhance clinical collaboration and education.

01

STREAM TO
MULTIPLE SCREENS



AMOLED screen provides superb image quality - better contrast, higher brightness, fuller viewing angle, a wider colour range to capture even the greatest detail of the eye. AMOLED consume less power, enables Frey to simplify the unique design that is ultra-thin with better durability.

02

STUNNING
AMOLED TECH



Work independently and efficiently. Frey SLI-200 does not require external PC or any other device to operate. All cables remain hidden in an ergonomic and minimalistic design. The eye lighting system, which can be controlled using the knob built into the lamp base, is included.

03

OUT OF THE BOX
& STAND ALONE



Result and image management is an essential part of doctor's workflow. SLI-200 simplifies and speeds up the work with 128GB internal storage. Gather a large number of heavy files. Select, the most interesting photos and sent them to your smartphone - without cluttering it.

04

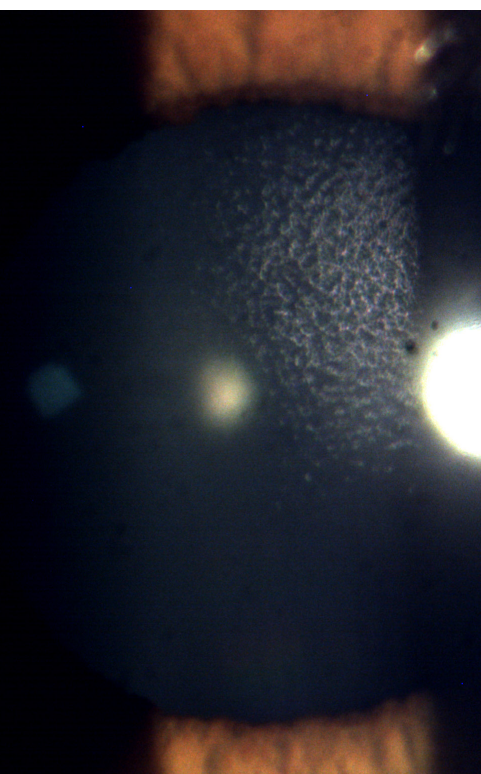
LARGE & RELIABLE
INTERNAL STORAGE



Use fast, stable and reliable Wi-Fi AC or Bluetooth 4.2 to connect all your devices. Simplify workspace and improve clinical workflows.

05

WORK
WIRELESSLY



HIGHLIGHTS

AMOLED 5' touch screen

Video streaming to multiple devices

CMOS Image Sensors with a 3.45 µm Pixel

128 GB internal high endurance flash storage

HDR & Global Shutter Function
for high-picture-quality imaging

Photo & video capture

Photos: 2548x1536

HD video: 1280x720

Bluetooth 4.2/ Wi-Fi AC

Color Depth: up to 36 BPP

Automatic L/R eye detection